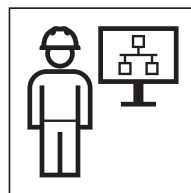
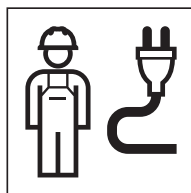


INSTALLATION MANUAL

MONTAGEANLEITUNG
INSTRUCTIONS DE MONTAGE
ISTRUZIONI PER IL MONTAGGIO



971.356.00.0(00)





GEFAHR

Elektrischer Schlag

Unsachgemäße Installation kann zu schweren Verletzungen oder zum Tod führen.

- ▶ Elektroanschluss darf nur durch ausgebildete Elektrofachkraft durchgeführt werden.
- ▶ Vor dem Anschliessen der Kabel Stromversorgung unterbrechen.
- ▶ Installation ausschliesslich innerhalb definierter Schutzbereiche vornehmen und geeignete Schutzmassnahmen treffen.



Weitere Sicherheitshinweise im Systemhandbuch zu Geberit Connect beachten.



DANGER

Electric shock

Incorrect installation can lead to death or serious injuries.

- ▶ Only trained electrically skilled persons are permitted to set up the electrical connection.
- ▶ Disconnect the power supply before connecting the cables.
- ▶ Only carry out the installation within the defined protective areas and take the appropriate safety measures.



Observe further safety instructions in the system manual for Geberit Connect.



DANGER

Décharge électrique

Une installation incorrecte peut entraîner des blessures graves, voire la mort.

- ▶ Le raccordement électrique ne doit être réalisé que par une personne qualifiée en électricité.
- ▶ Avant de raccorder les câbles, couper l'alimentation électrique.
- ▶ Réaliser l'installation uniquement à l'intérieur des périmètres de protection définis et prendre des mesures de protection adaptées.



Consulter les autres consignes de sécurité dans le manuel du système Geberit Connect.



PERICOLO

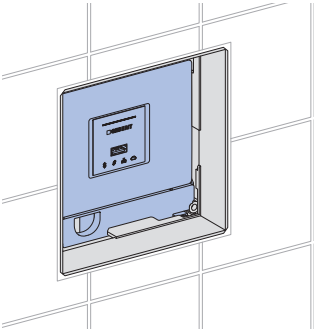
Scossa elettrica

Un'installazione non appropriata può provocare gravi lesioni o la morte.

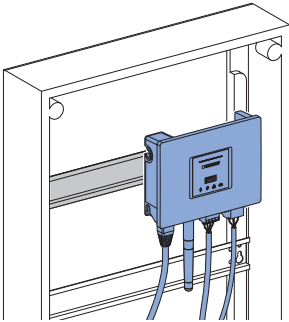
- ▶ L'allacciamento elettrico deve essere effettuato solo da un elettricista qualificato.
- ▶ Prima di collegare i cavi, interrompere l'alimentazione elettrica.
- ▶ Effettuare l'installazione solo all'interno di perimetri di protezione definiti e adottare delle misure di protezione idonee.



Osservare le ulteriori avvertenze di sicurezza riportate nel manuale del sistema per Geberit Connect.



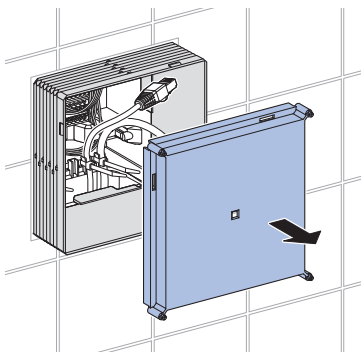
→ **A**  4



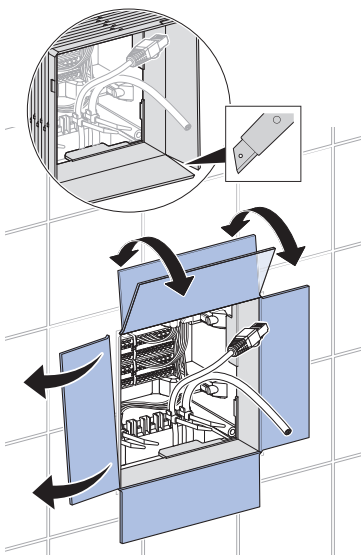
→ **B**  9

A

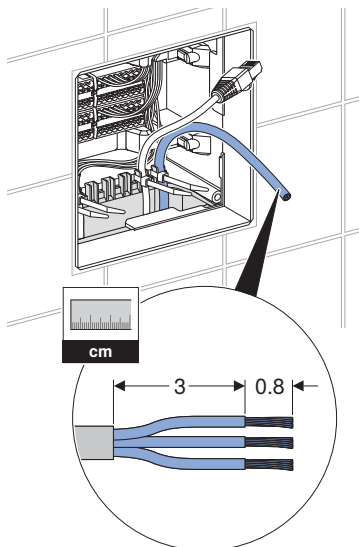
1



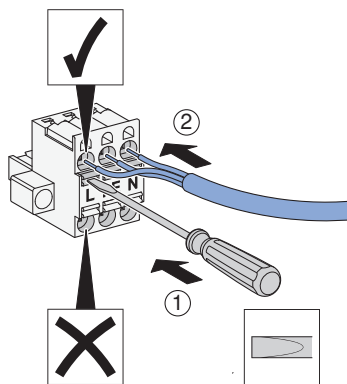
2



3



4



L	braun / brown / marron / marrone
PE	gelb/grün / yellow/green / jaune/vert / giallo/verde
N	blau / blue / bleu / blu

5



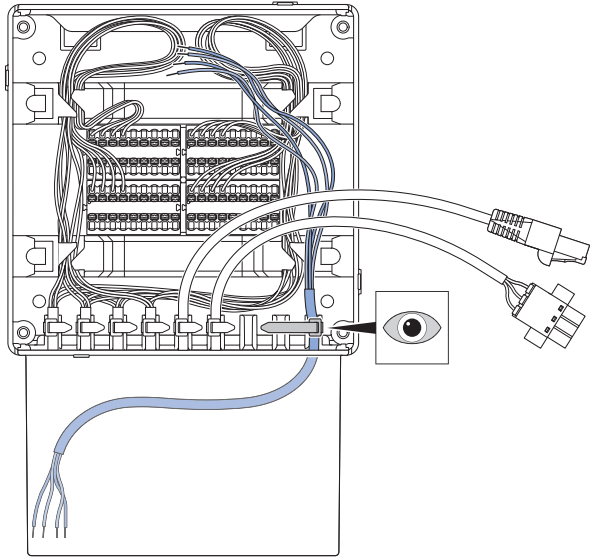
GEBUS →

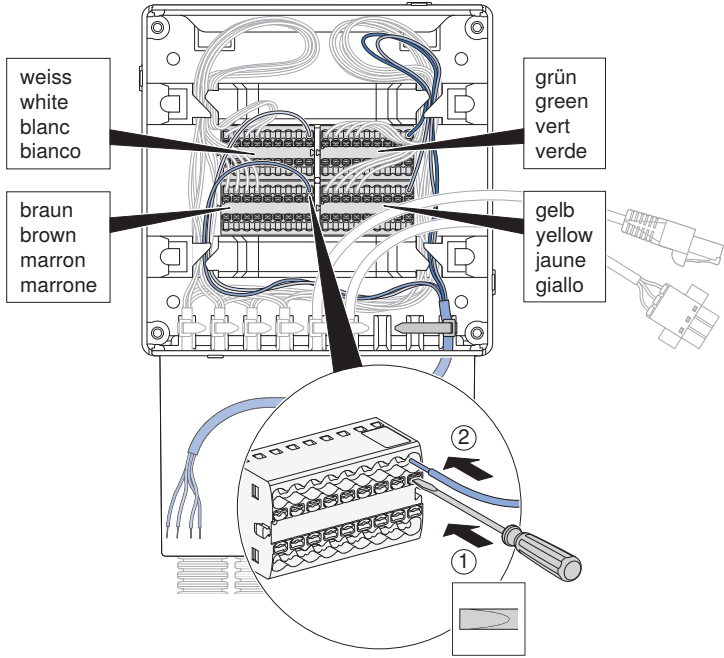


System Manual
Geberit Connect

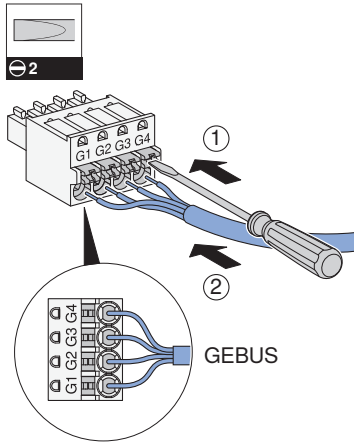


6

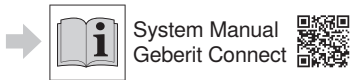




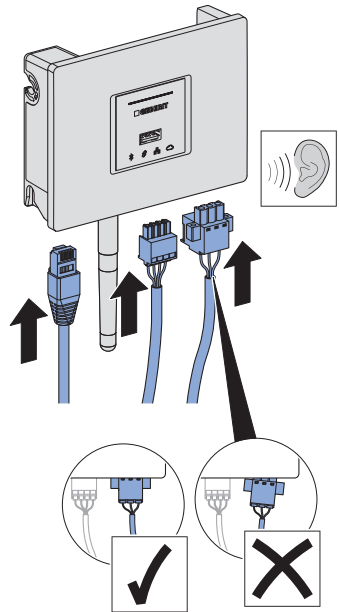
8



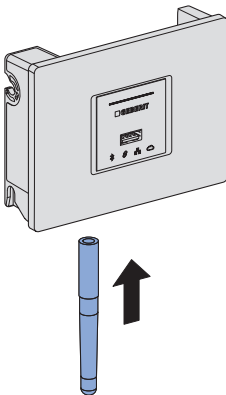
G1	weiss / white / blanc / bianco
G2	braun / brown / marron / marrone
G3	grün / green / vert / verde
G4	gelb / yellow / jaune / giallo



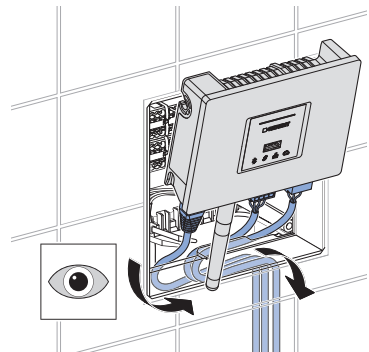
10



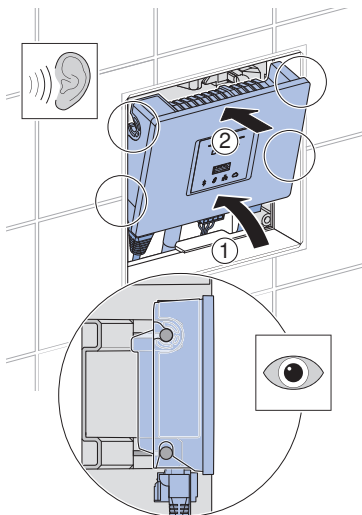
9



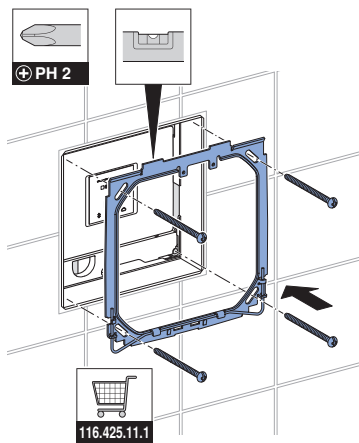
11



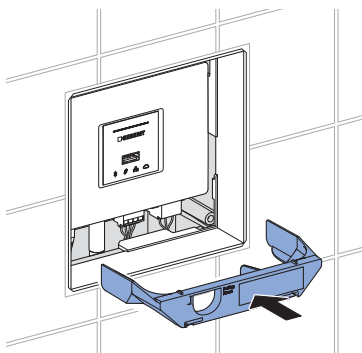
12



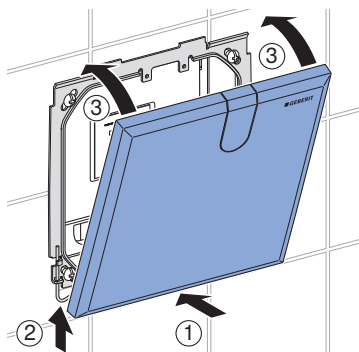
14



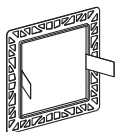
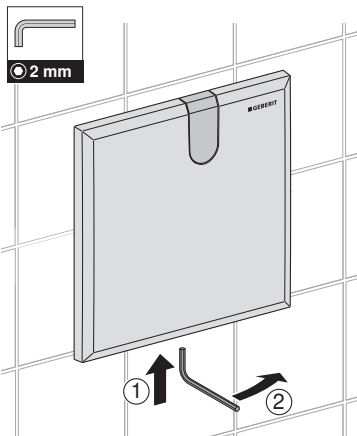
13



15

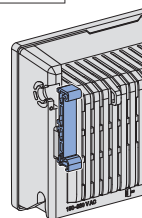
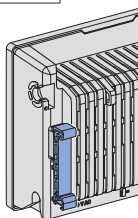
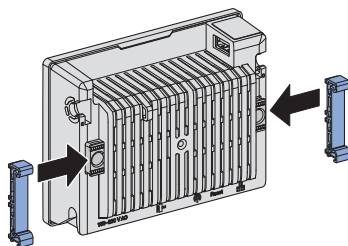


16

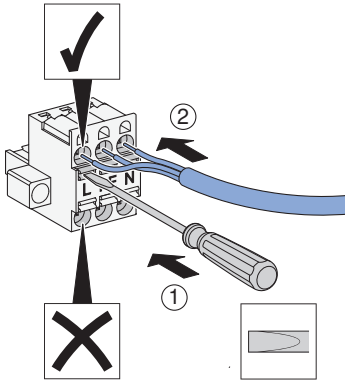


B

1

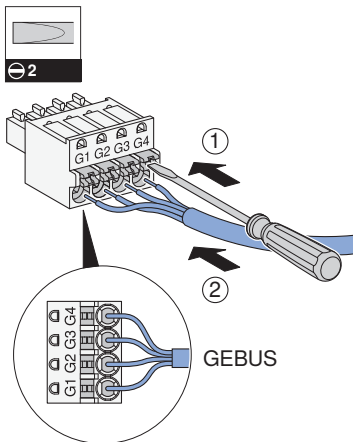


2

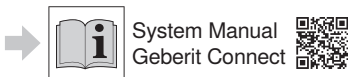


L	braun / brown / marron / marrone
PE	gelb/grün / yellow/green / jaune/vert / giallo/verde
N	blau / blue / bleu / blu

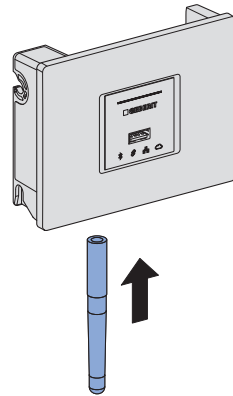
3



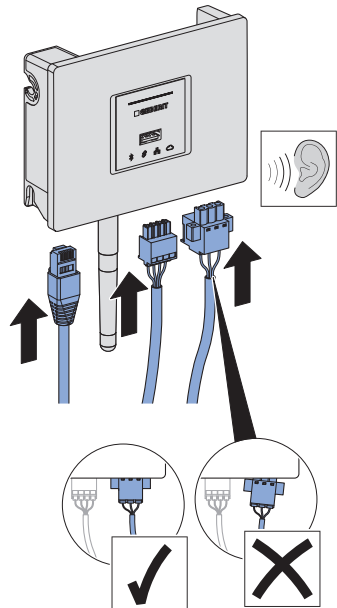
G1	weiss / white / blanc / bianco
G2	braun / brown / marron / marrone
G3	grün / green / vert / verde
G4	gelb / yellow / jaune / giallo



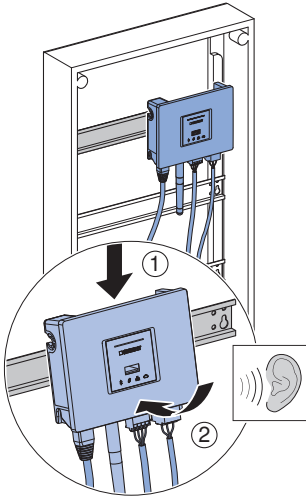
4



5



6



Geberit International AG
Schachenstrasse 77, CH-8645 Jona
documentation@geberit.com
www.geberit.com

